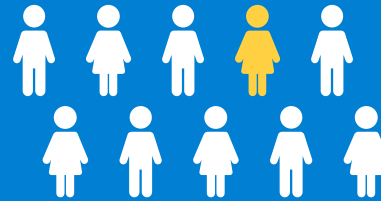


The Childhood Bereavement Estimation Model (CBEM)¹ approximates rates of U.S. children and youth who will experience the death of a parent or sibling by the time they reach adulthood. Results from the CBEM are updated annually using national, state, and regional vital statistics.² This report uses data from 2015 to 2019, the most recent years of data from the Centers for Disease Control and Prevention^{§*}.

1 in 10

children in Kentucky will experience the death of a parent or sibling by age 18



5TH

CBEM RANKING BY STATE[†]

9.7% ~ 97K

children will be bereaved by age 18
HIGHER than national rate of 7.3%



& MORE THAN
DOUBLES

234K

youth will be bereaved by age 25

Leading Causes of Death in Kentucky²

Percentages reflect the proportion of total deaths caused by each of the leading causes for youth and adults according to the CDC.

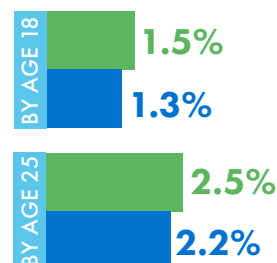
Youth Ages 0 - 24 [‡]		Adults Ages 25 - 60 [‡]
32.0% - Accidents	#1	Cancer - 21.2%
13.6% - Conditions Related to Birth	#2	Heart Disease - 19.5%
10.4% - Birth Defects	#3	Accidents - 18.1%
10.2% - Suicide	#4	Suicide - 4.8%
7.3% - Homicide	#5	Chronic Lower Respiratory Diseases - 4.2%

Death of a Sibling & Death of a Parent

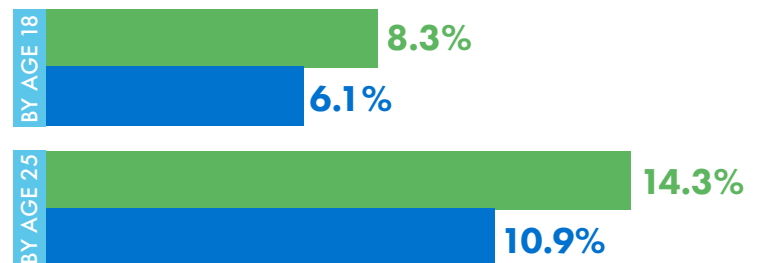
The CBEM provides separate, independent estimates for youth who will experience the death of a parent or the death of a sibling.

KY ■ **U.S.** ■

Sibling



Parent



Sources

1. Burns et al. (2020). *American Journal of Orthopsychiatry*, Advanced online publication.
2. Centers for Disease Control and Prevention, National Center for Health Statistics, CDC WONDER Online Databases.

* Please see CBEM Technical Appendix for additional information.
† States and D.C. ranked from (1) highest CBEM rate to (51) lowest CBEM rate.
‡ Age ranges for leading causes of death align with CBEM analyses.

§ Although CDC released preliminary COVID-19 death data for 2020, the complete dataset needed to conduct CBEM analyses will not be released until 2022.